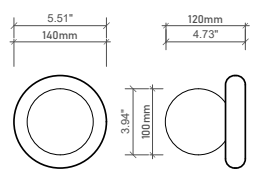
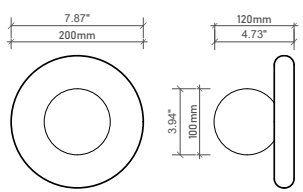


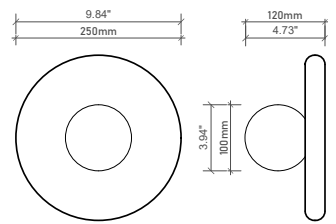
SPECIFICATION



Marlowe 14



Marlowe 20

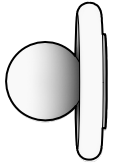


Marlowe 25

DWG

PRODUCT NO

ML04



Marlowe Sconce

Type:	Sconce
Globe type:	G9 LED
Voltage:	110V-220V compatible
Wattage:	5W
Environment:	Indoor
Installation:	Hard Wired

Design Highlights

Structure: Sleek round Stone base (7.9" diameter / 20 cm) paired with a frosted glass globe (ML04)/ Alabaster Globe (ML04A) for soft, glare-free illumination.

Lighting Effect: The frosted globe emits a warm, ambient glow, while the Marble base glows subtly when backlit, showcasing its veins.

Features
Handcrafted Uniqueness: Each marble is hand-selected for its veining – no two sconces are alike.

Sealed Stone: Treated with a non-toxic sealant to protect against dust and moisture.

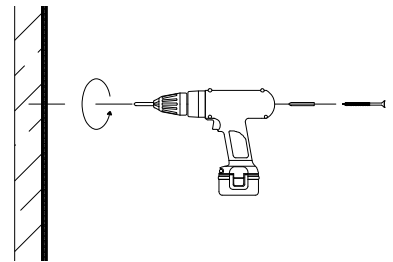
Care Instructions
Marble Base: Wipe gently with a dry microfiber cloth; avoid water or chemicals.

Frosted/ Alabaster Globe: Dust with a soft brush or lint-free cloth.

Note
Due to the stone's weight, ensure walls are reinforced (e.g., studs, concrete).

INSTALLATION

STEP 1



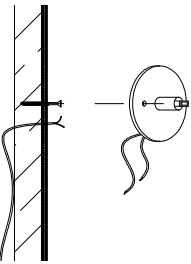
Locate & Mark

- Hold the hanging base against the wall at the desired height.
- Use a level to ensure it's straight, then mark screw hole positions.
- Verify no electrical wires/pipes are behind marked spots

Drill & Secure

- Drill holes at marked points using a masonry bit (for concrete/brick) or wood bit (for studs).
- Insert wall plugs (expansion anchors) if needed.
- Align the hanging base with holes and fasten using screws. Ensure it's firmly attached

STEP 2

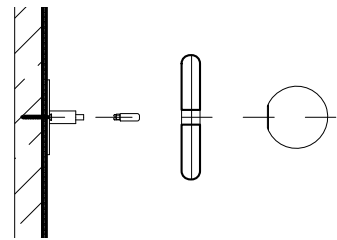


Connect Wires

- Important:
Confirm power is OFF

- Feed home wiring through the base's center opening.
- Secure with wire nuts or terminal blocks. Wrap connections with electrical tape.
- Tuck wires neatly into the electrical box.

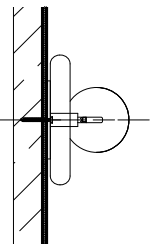
STEP 3



Attach the Light

- Align the lamp body with the mounted base.
- Install the bulb(s) into the socket
- Use only the recommended bulb type and wattage
- Secure the lampshade using its locking mechanism

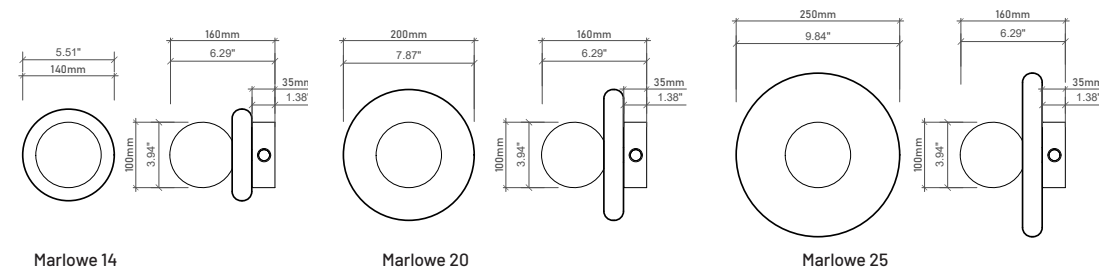
STEP 4



Restore Power & Inspect

- Turn power back on at the breaker.
- Test the light. Check for flickering, unusual sounds, or heat.
- If issues occur, immediately turn off power and recheck connections.

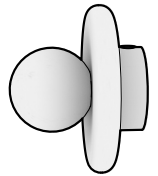
SPECIFICATION



DWG

PRODUCT NO

ML04



Marlowe Sconce Rechargeable

Type:	Wall Sconce
Globe type:	G9 LED
Voltage:	110V-220V compatible
Wattage:	5W
Environment:	Indoor
Installation:	Rechargeable

Design Highlights

Structure: Sleek round Noyx base (7.9" diameter / 20 cm) paired with a frosted glass globe (ML04)/ Alabaster Globe (ML04A) for soft, glare-free illumination.

Lighting Effect: The frosted globe emits a warm, ambient glow, while the Marble base glows subtly when backlit, showcasing its veins.

Features
Handcrafted Uniqueness: Each marble is hand-selected for its veining – no two sconces are alike.

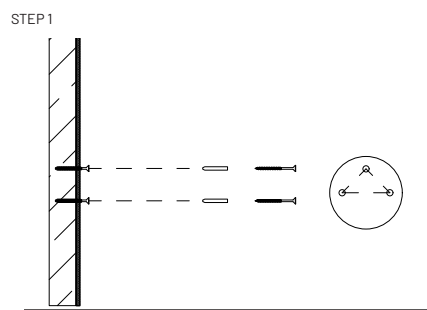
Care Instructions
Marble Base: Wipe gently with a dry microfiber cloth; avoid water or chemicals.

Frosted/ Alabaster Globe: Dust with a soft brush or lint-free cloth.

Note
Due to the stone's weight, ensure walls are reinforced (e.g., studs, concrete).

Sealed Stone: Treated with a non-toxic sealant to protect against dust and moisture.

INSTALLATION

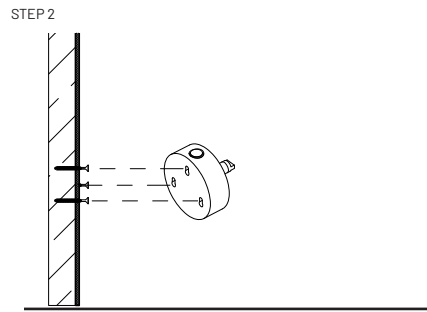


Locate & Mark

- Hold the hanging base against the wall at the desired height.
- Use a level to ensure it's straight, then mark screw hole positions.
- Verify no electrical wires/pipes are behind marked spots

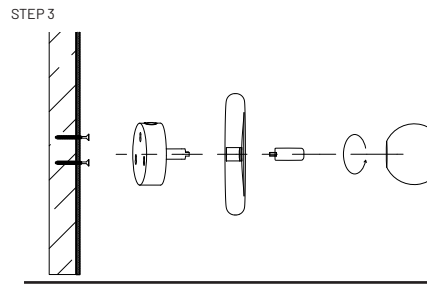
Drill & Secure

- Drill holes at marked points using a masonry bit (for concrete/brick) or wood bit (for studs).
- Insert wall plugs (expansion anchors) if needed.
- Align the hanging base with holes and fasten using screws. Ensure it's firmly attached



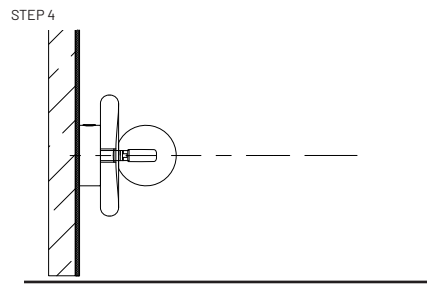
Mount the Rechargeable Base

- Attach the rechargeable base unit to the installed wall mount until it clicks into place. Confirm it is securely locked.



Attach the Light

- Align the lamp body with the mounted base.
- Install the bulb(s) into the socket
- Use only the recommended bulb type and wattage
- Secure the lampshade using its locking mechanism



Restore Power & Inspect

- Test the light switch and charging function (if applicable)
- Check for any flickering, unusual sounds, or excessive heat.
- If issues occur, immediately turn off power and recheck connections.